



Installation and configuration manual

With Solis Hybrid Inverter

Pytes Lithium Battery V series

With Solis S5 Series Hybrid Inverter

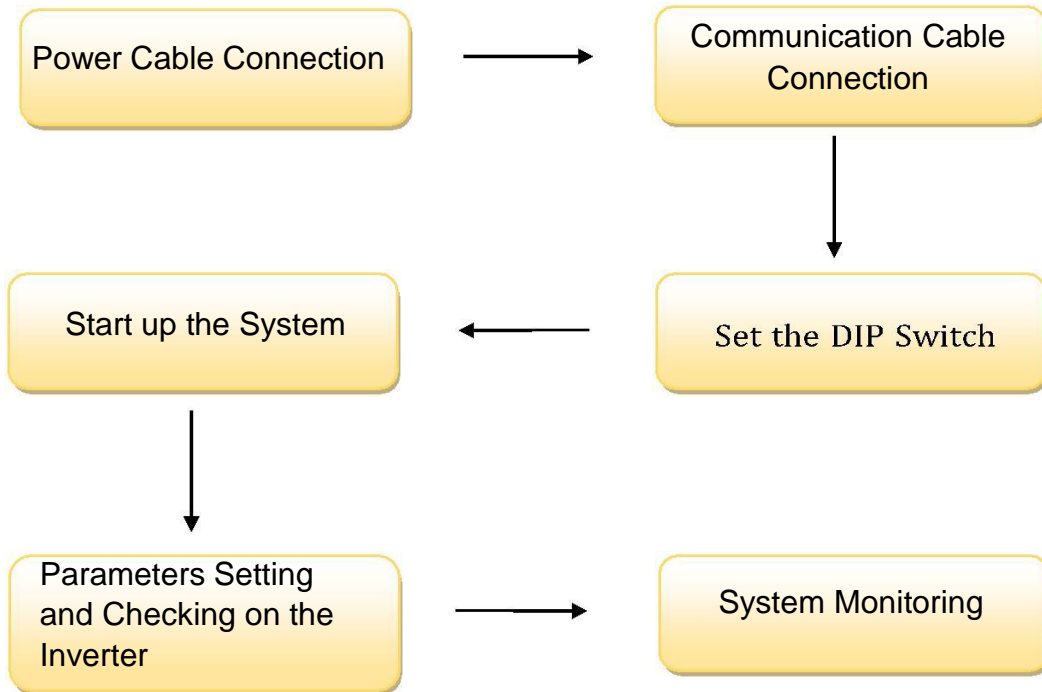


BOM LIST

Before installation, you should prepare following items. Definition CAN Port Pin for BMS is as follow.

Item	Remarks	Quantity
Power Cable (DC)	<ul style="list-style-type: none"> ■ Conductor cross-section: UL10269-1/0AWG-200mm-Amphenol 8.0mm Or TMR-190*25*18mm ■ Cable diameters:14mm to 25mm ■ Only copper cables may be used ■ The DC cables must be sized for the maximum battery voltage and the maximum battery current (see battery manufacturer documentation). ■ Power cables head must be ■ Amphenol type. 	Depends on the number of batteries and the connection method
CAN Cable	CAN communication Terminal (RJ45 port) follow CAN protocol, to output batteries information	1
Battery	V Series	Depends on the number of batteries and the connection method
Inverter	Solis	1

HOW TO INSTALL



CAUTION: If you want to get more inverter-related settings, please refer to the inverter user manual first.

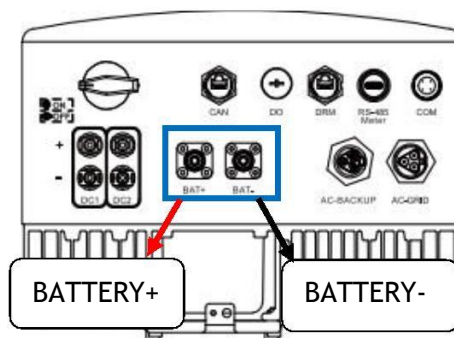
1. Power Cable Connection

Step.1

Open the front housing of the Inverter.

Step.2

Connect the red cable and black cable to the inverter connector as shown in Pic 1.1



Pic 1.1

Step.3

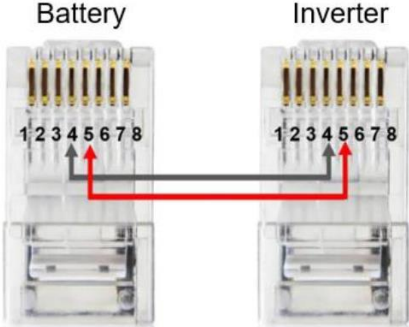
At the other end of the power cable, connect to the battery as shown Pic 1.2 (Ensure that the battery power switch is off)



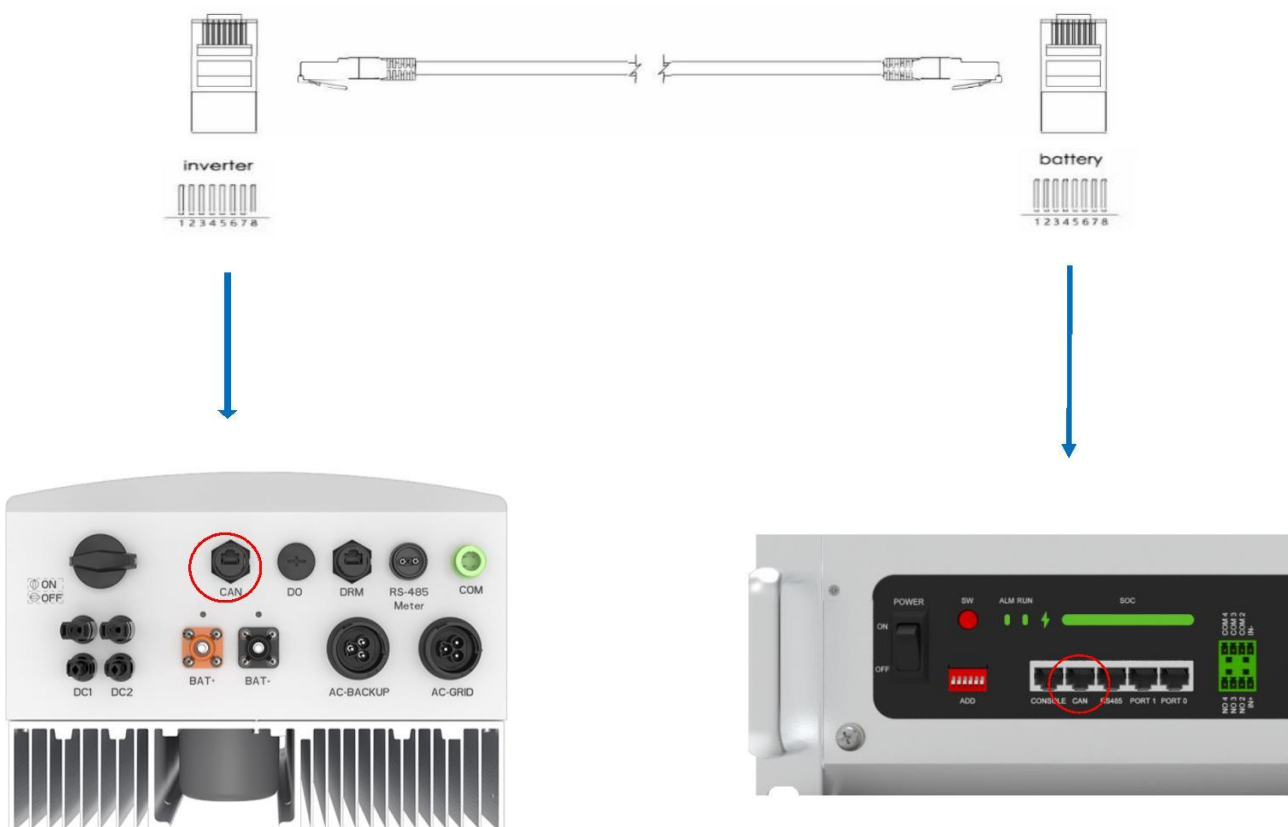
Pic 1.2

2. Communication Cable Connection

CAN port definition

Version	Pin number of com. cable
V Series	

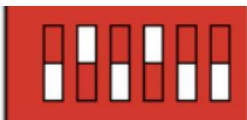
Insert inverter end of the CAN cable into the controller at CAN. Insert battery end of the CAN cable into the battery at CAN. (Ensure the correct sequence of wires inside the CAN cable). as shown in Pic 2.1



Pic 2.1

3. Set the DIP Switch

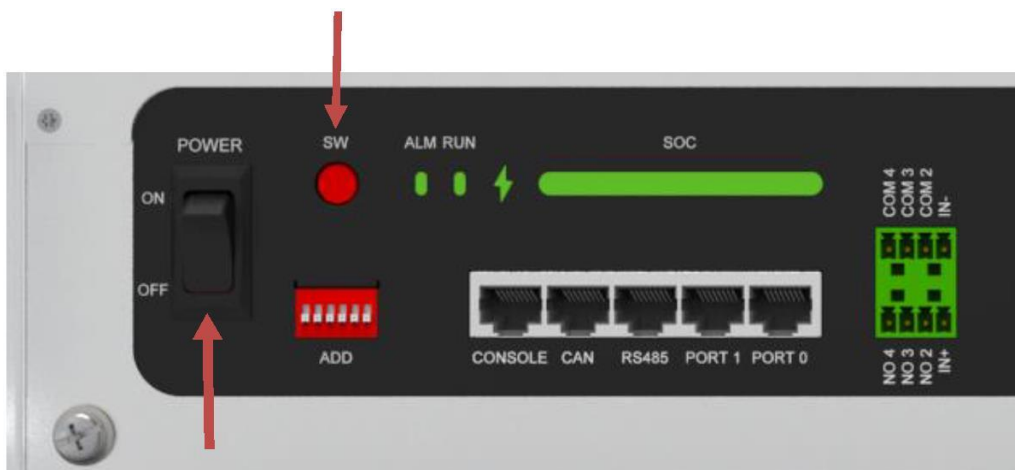
Set the DIP switch as shown in table below.

Version	DIP setting
V Series	<div style="display: inline-block; border: 1px solid gray; padding: 5px; margin-right: 10px;">Solis</div> 

4. Start up the System

Start up the battery.

Firstly, press the power button on, next press the SW red ring button as shown in pic 4.1.



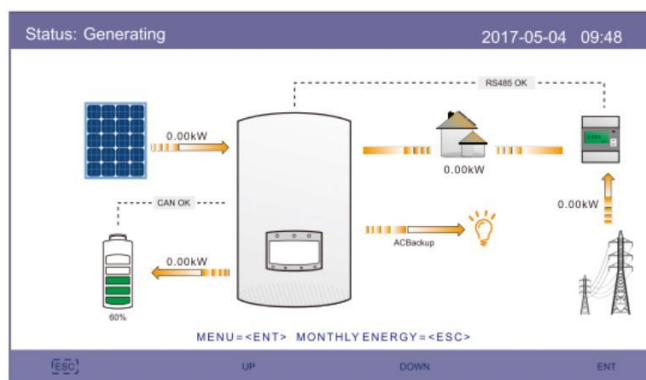
Pic 4.1

5. Parameters Setting and Checking on the Inverter

※CAUTION: If you want more details about the batteries settings, please check the operating manual of inverter.

Step1.

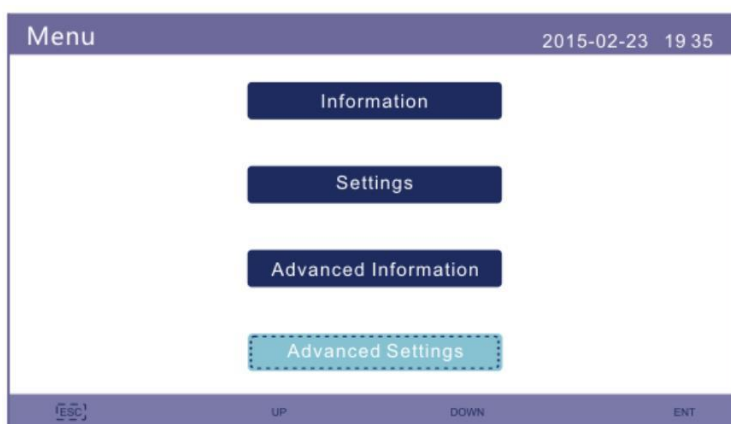
Check the inverter main page on the screen. as shown in pic 5.1.



Pic 5.1

Step2.

Enter the submenu, there are four submenu in the main menu. Please set parameters in **Advanced Setting**, as shown in 5.2.



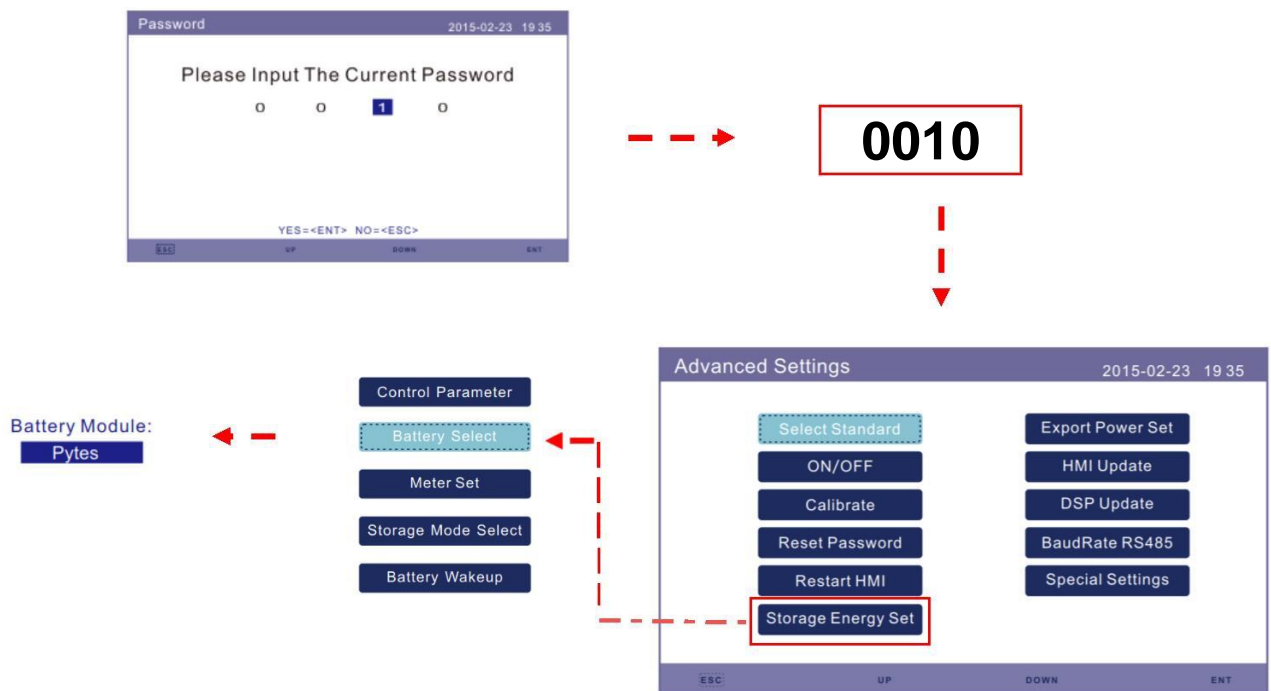
Pic 5.2

Step3.

Click the Advanced settings. Input Password number **0010**, then enter the submenu to set parameters as shown in 5.3.

There are many items in the submenu, please set them comply to the inverter manual for the details.

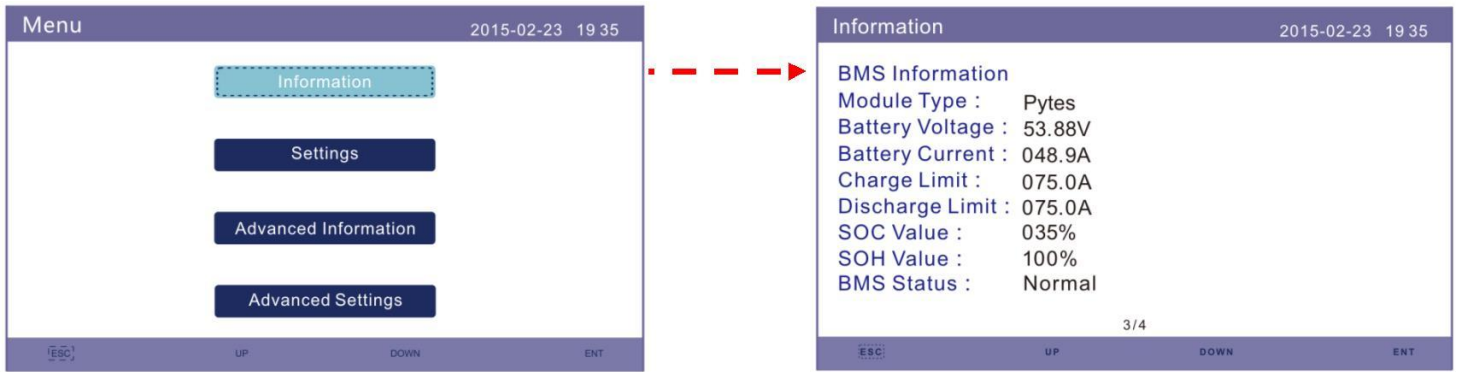
The most important parameters setting is the Storage Energy Set, click into the item and set battery module to **Pytes**.



· Pic 5.3

Step4.

Click the information and check parameters as shown in 5.4.



Pic 5.4

Step5.

Click the Advanced information and check Running Message as shown in 5.5.



Pic 5.5

3. System Monitoring

※CAUTION: If you want more details about system monitoring, please download APP of inverters .



SolisCloud Monitoring APP
IOS download



SolisCloud Monitoring APP
Android download